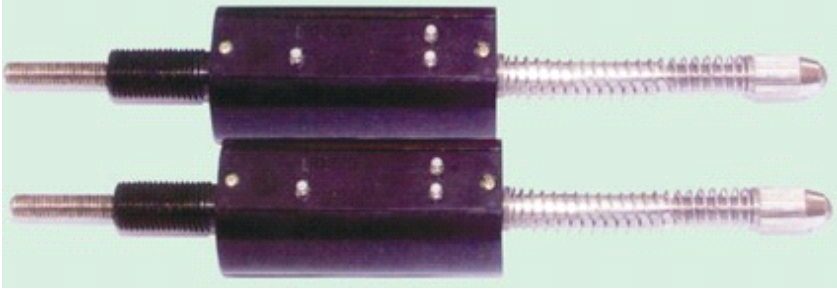


MINOR® LPS-14L, 14S



Apply for travel controlling, the detection of electric actuator institutions etc. Stroke range: 0-14mm

Electrical Specifications

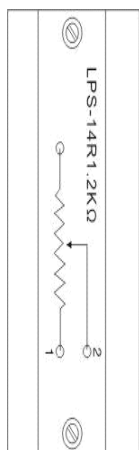
Active Electrical Travel	14mm	
Total resistance	1.2K Ω	2K Ω
Total resistance error	$\pm 20\%$	
Independent linearity	$\pm 1\%$ (0.5%)	
额定功率	1W/70°	
Output smooth	$\pm 0.1\%$	
Insulation resistance	DC500V	100M Ω 以上
Dielectric strength	AC500V	1 minute

Mechanical Specifications

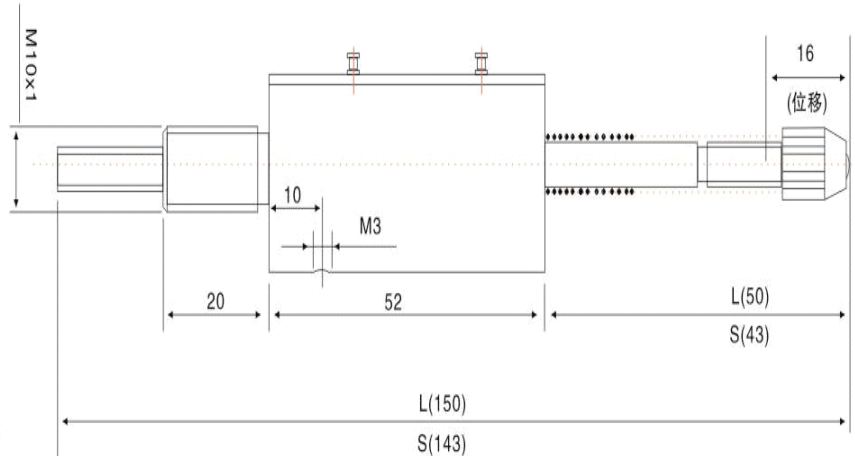
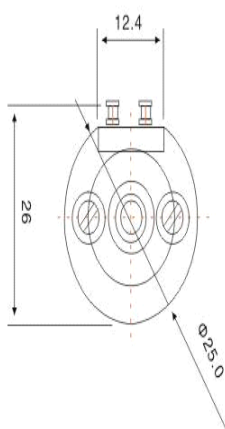
Mechanical travel	16mm
Sliding force	29×10^{-2} N
Weight	About 70g

Environment Performance

Operating temperature range	-40~100°C
Vibration	98m/s ² (10G)500Hz
Operating speed	490m/S ² (50G)11ms
Working life	10×10^6 cycles



接线图
Wiring diagram



外形图
Outline dimensions